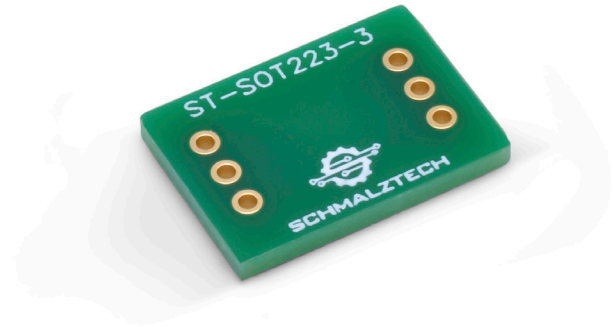
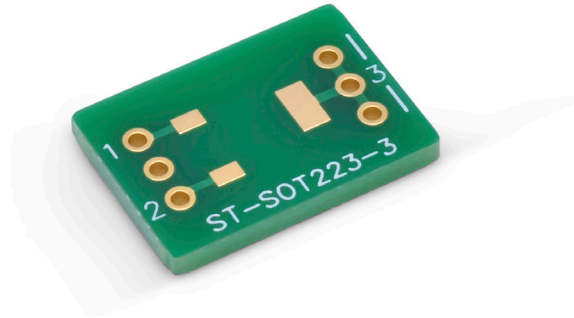




# ST-SOT223-3

## SOT223-3 SMD to DIP Adapter



- Converts SOT223-3 SMD parts to a DIP form factor
- High quality PCB can withstand re-work
- Enables SMD parts to be used with a breadboard or perfboard
- 0.1" pitch holes for standard headers

Specifications	
DIP Pitch	0.1"
SMD Package	SOT223-3
Surface Finish	ENIG
Temperature Rating	-30°C to +110°C

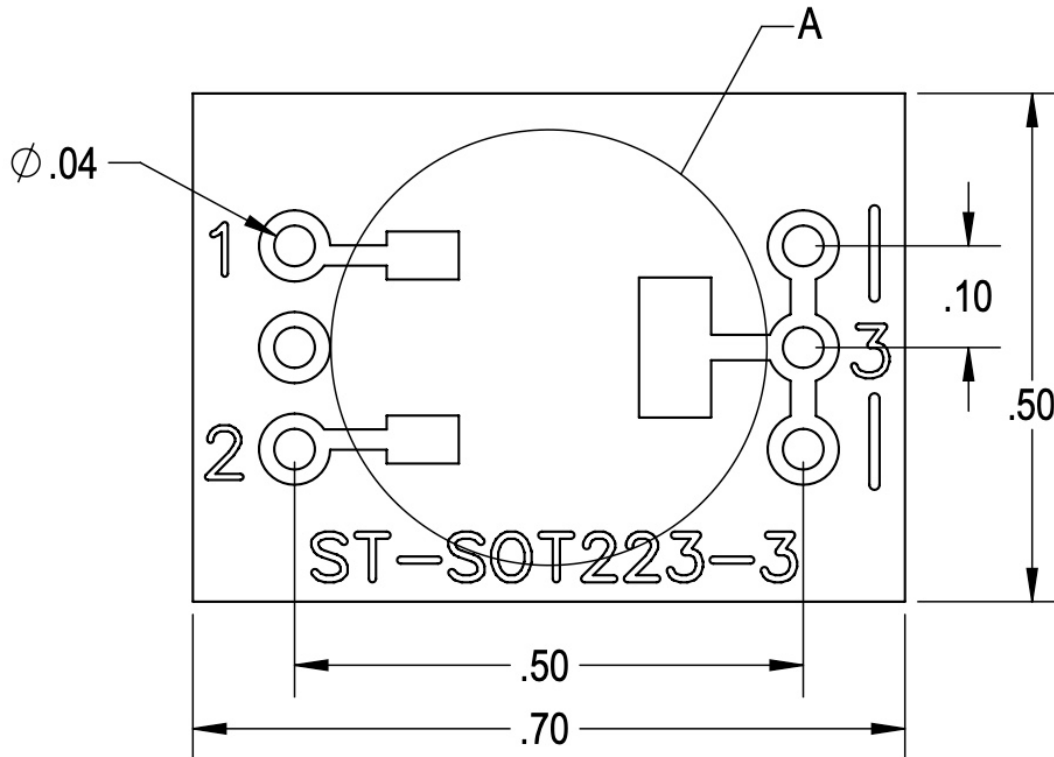
This SMD to DIP breakout board enables the easy conversion of a surface mount package to a DIP form factor. This adapter makes prototyping with surface mount parts fast and easy. Holes with a standard 0.1" pitch allow the board to work with common headers and enable SMD parts to be used in breadboards and perfboards. This SMD to DIP adapters are made with a premium ENIG surface finish and the board is made of high quality FR4 which can withstand high temperature soldering and re-work.



# ST-SOT223-3

## SOT223-3 SMD to DIP Adapter

### Mechanical Drawings



### Electrical Connections

Each pad of an SMD footprint is electrically connected to the nearest through hole connection on the SMD to DIP adapter board.



# ST-SOT223 - Ordering Information

**ST-SOT223-** \_\_\_\_\_

**SMD Package**

- 3: SOT223-3
- 4: SOT223-4
- 5: SOT223-5
- 6: SOT223-6

## Ordering

To order please visit [www.schmalztech.com](http://www.schmalztech.com) or one of our distributors to quickly place an online order.

Orders may also be placed by email or phone:

Email: [sales@schmalztech.com](mailto:sales@schmalztech.com)

Phone: +1 (844) 399-9213

## Expedited Shipping

If overnight shipping is required please contact us directly so that we can expedite your order. Overnight shipping is provided through UPS and will incur an additional charge

## Custom Designs

Can't find what you need? We can design and produce a custom board to fit your exact needs. Please reach out to us for additional information and pricing.